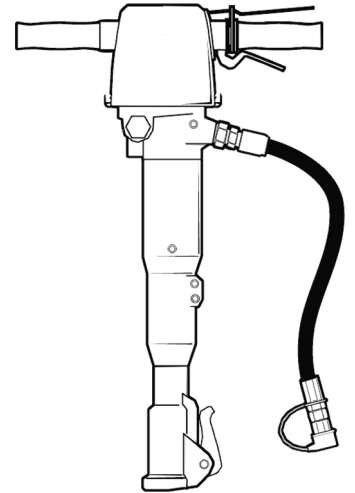


Spare parts list

Handheld hydraulic breakers

	Valid from serial number
LH 180 25 x 108 mm (1 x 4¼ in.)	187700
LH 180 28 x 152 mm (1⅛ x 6 in.)	187700
LH 180 28 x 160 mm (1⅛ x 6¼ in.)	187700
LH 180 32 x 152 mm (1¼ x 6 in.)	187700
LH 180 32 x 160 mm (1¼ x 6¼ in.)	187700
LH 190 E 25 x 108 mm (1x 6¼ in.)	187700
LH 190 E 28 x 152 mm (1¼ x 6 in.)	187700
LH 190 E 28 x 160 mm (1⅛ x 6¼ in.)	187700
LH 190 E 32 x 152 mm (1¼ x 6 in.)	187700
LH 190 E 32 x 160 mm (1¼ x 6¼ in.)	187700



Contents

General information.....	5
Spare parts list.....	6
LH 180, 190 E.....	6
Nose parts.....	10
Handle standard.....	14
E-handle.....	16
Tightening torque.....	18
Working tools.....	19
US standard hexagon 1 x 4¼ in. (25 x 108 mm).....	19
US standard hexagon 1⅛ x 6¼ in. (28 x 160 mm).....	20
US standard hexagon 1¼ x 6 in. (32 x 152 mm).....	21
US standard hexagon 1¼ x 6¼ in. (32 x 160 mm).....	22
ISO standard hexagon 25 x 108 mm (1 x 4¼ in.).....	22
ISO standard hexagon 28 x 160 mm (1⅛ x 6¼ in.).....	23
ISO standard hexagon 32 x 152 mm (1¼ x 6 in.).....	24
ISO standard hexagon 32 x 160 mm (1¼ x 6¼ in.).....	25
Accessories.....	26
Hoses and couplings.....	26
Kits.....	27
Label kit.....	27
Seal kit.....	28
Trigger valve kit.....	29
Accumulator kit.....	30

General information

This spare parts list applies to the following:

Part number	Description
1801 3443 36	Handheld hydraulic breaker LH 180 25 x 108 mm (1 x 4¼ in.)
1801 3443 37	Handheld hydraulic breaker LH 180 28 x 152 mm (1½ x 6 in.)
1801 3443 38	Handheld hydraulic breaker LH 180 28 x 160 mm (1½ x 6¼ in.)
1801 3443 39	Handheld hydraulic breaker LH 180 32 x 152 mm (1¼ x 6 in.)
1801 3443 40	Handheld hydraulic breaker LH 180 32 x 160 mm (1¼ x 6¼ in.)
1801 3443 41	Handheld hydraulic breaker LH 190 E 25 x 108 mm (1 x 4¼ in.)
1801 3443 42	Handheld hydraulic breaker LH 190 E 28 x 152 mm (1½ x 6 in.)
1801 3443 43	Handheld hydraulic breaker LH 190 E 28 x 160 mm (1½ x 6¼ in.)
1801 3443 44	Handheld hydraulic breaker LH 190 E 32 x 152 mm (1¼ x 6 in.)
1801 3443 45	Handheld hydraulic breaker LH 190 E 32 x 160 mm (1¼ x 6¼ in.)

Use only authorized parts. Any damage or malfunction caused by the use of unauthorized parts is not covered by Warranty or Product Liability. Any unauthorized use or copying of the contents or any part thereof is prohibited. This applies in particular to trademarks, model denominations, part numbers, and drawings.

Instructions for use

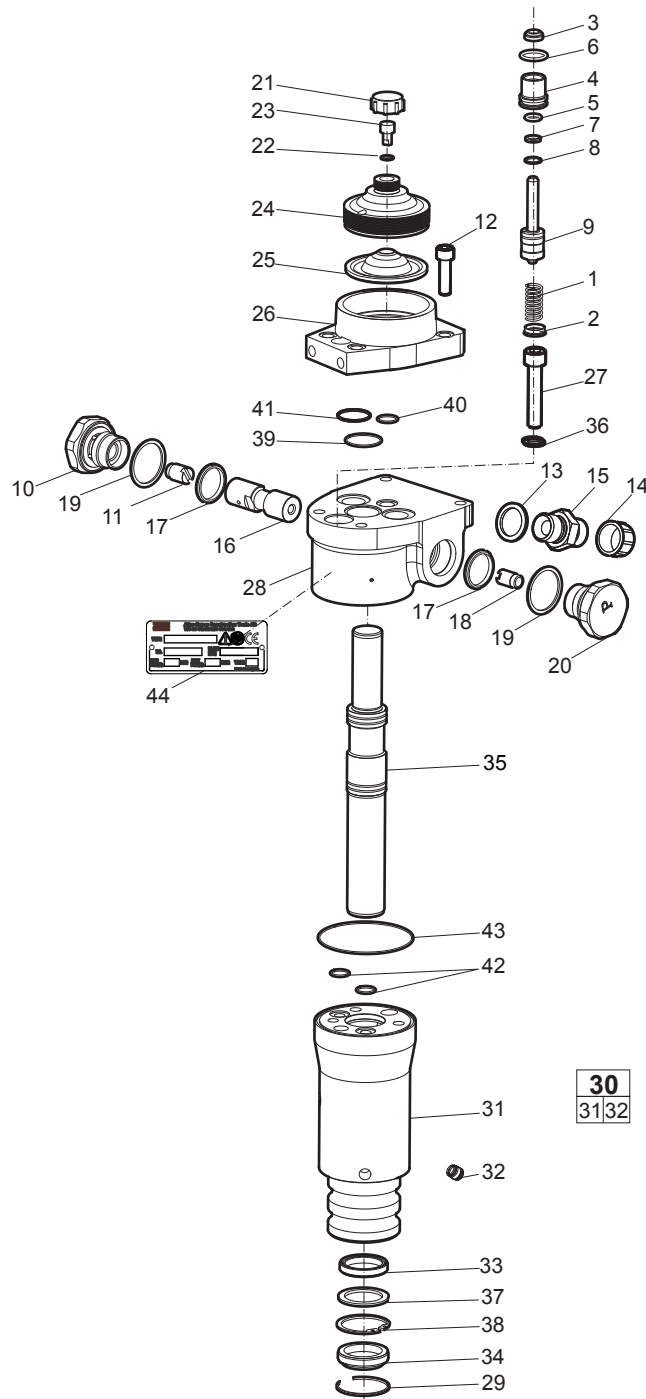
This spare parts list contains no safety regulations and is merely intended to assist in the ordering of spare parts.

For information about operating, servicing, or repairing, the relevant Safety and operating instructions must be consulted at all costs.

Please observe the safety instructions listed in the relevant Safety and operating instructions!

Spare parts list

LH 180, 190 E

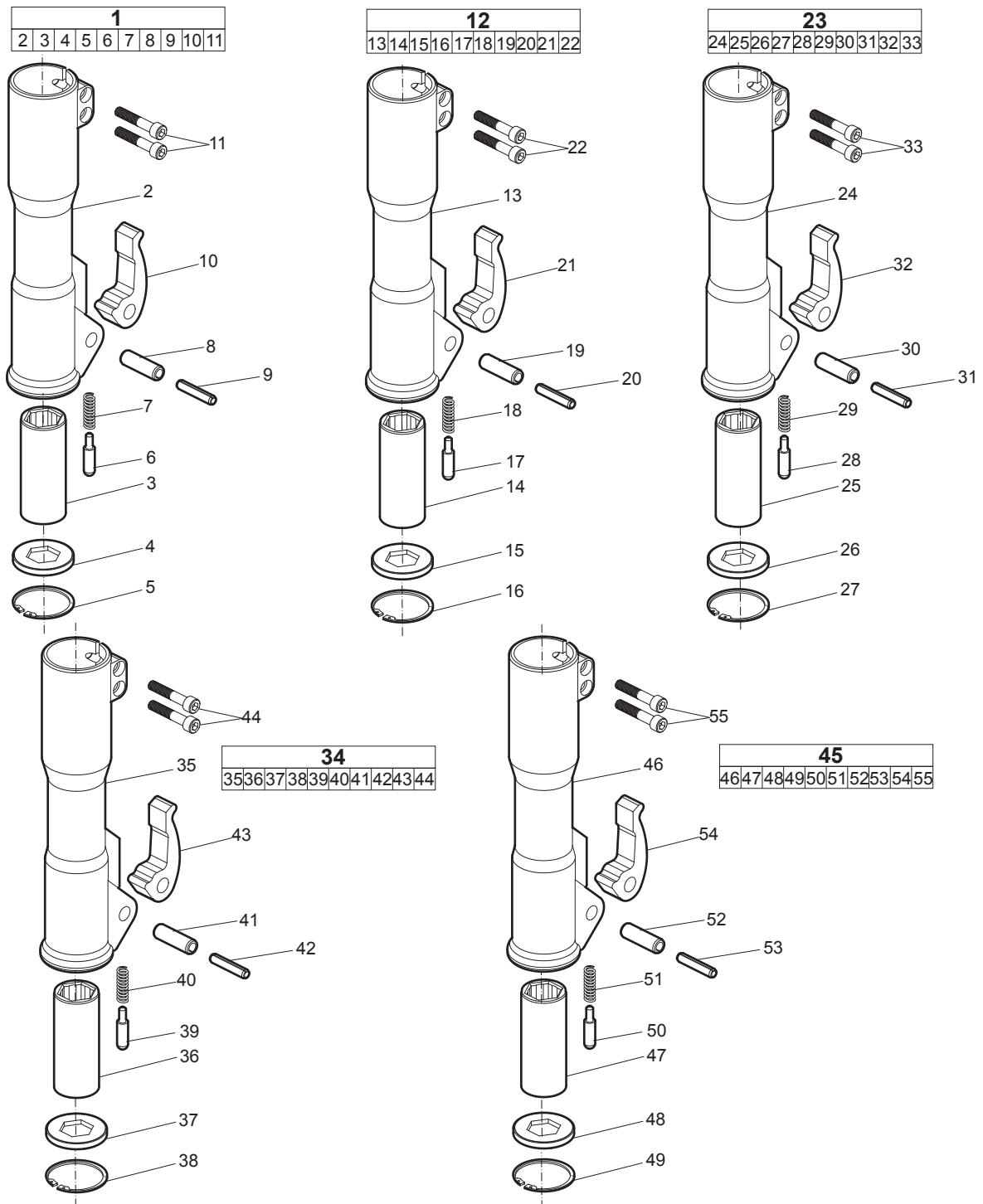


30
31/32

No.	Description	Remark	Quantity	Part number
1	Spring		1	3371 8141 63
2	Washer		1	3371 8147 52
3	Seal	Ø 0.31 x 0.55 x 0.14 x 0.20 in. Ø 8 x 14 x 3.5 x 5 mm	1	3371 8055 03
4	Packing gland		1	3371 8141 20
5	O-ring	Ø 0.33 x 0.09 in. Ø 8.3 x 2.4 mm	1	3371 8147 00
6	O-ring	Ø 0.64 x 0.09 in. Ø 16.3 x 2.4 mm	1	3371 8147 02
7	Back-up ring		1	3371 8147 01
8	Circlip		1	3371 8147 12
9	Trigger spool with rod		1	3371 8200 71
10	Guide socket T		1	3371 8141 16
11	Auxiliary spool T		1	3371 8141 15
12	Screw	M10 x 35 mm	4	3371 8147 23
13	Seal ring	½ in. BSP 12.5 mm BSP	2	3371 8057 14
14	Protective cap	½ in. BSP 12.5 mm BSP	2	3371 8137 09
15	Nipple	½ in. BSP 12.5 mm BSP	2	3371 8057 11
16	Spool		1	3371 8141 12
17	O-ring	Ø 0.95 x 0.12 in. Ø 24.2 x 3 mm	2	3371 8147 03
18	Auxiliary spool P		1	3371 8141 13
19	O-ring	Ø 1.30 x 0.08 in. Ø 33 x 2 mm	2	3371 8147 10
20	Guide socket P		1	3371 8141 14
21	Protective nut	M24 x 1.5 mm	1	3376 1170 71
22	Seal ring	Ø 0.34 x 0.51 x 0.04 in. Ø 8.7 x 13 x 1 mm	1	3371 8147 09
23	Charging screw		1	3371 8131 03
24	Accumulator cover		1	3371 8140 66
25	Diaphragm		1	3371 8140 52
26	Accumulator body		1	3371 8150 65
27	Screw	M10 x 50 mm	3	3371 8157 20
28	Valve housing	Plugged	1	3371 8140 63
29	Lock ring		1	3371 8157 38
30(31-32)	Cylinder, complete		1	3371 8150 66
31	Cylinder		1	-
32	Fitting		4	3371 8147 33
33	Seal		1	3371 8141 72
34	Wiper		1	3371 8147 07
35	Piston		1	3371 8141 25
36	Back-up washer		3	3371 8157 35
37	Back-up washer		1	3371 8141 69
38	Circlip		1	3371 8147 54
39	O-ring	Ø 0.98 x 0.06 in. Ø 25 x 1.5 mm	1	3371 8147 48
40	O-ring	Ø 0.51 x 0.06 in. Ø 13 x 1.5 mm	1	3371 8147 49
41	O-ring	Ø 0.87 x 0.06 in. Ø 22 x 1.5 mm	2	3371 8207 06
42	O-ring	Ø 0.47 x 0.06 in. Ø 12 x 1.5 mm	2	3371 8147 50
43	O-ring	Ø 2.72 x 0.06 in. Ø 69 x 1.5 mm	1	3371 8147 51

No.	Description	Remark	Quantity	Part number
44	Data plate		1	-

Nose parts

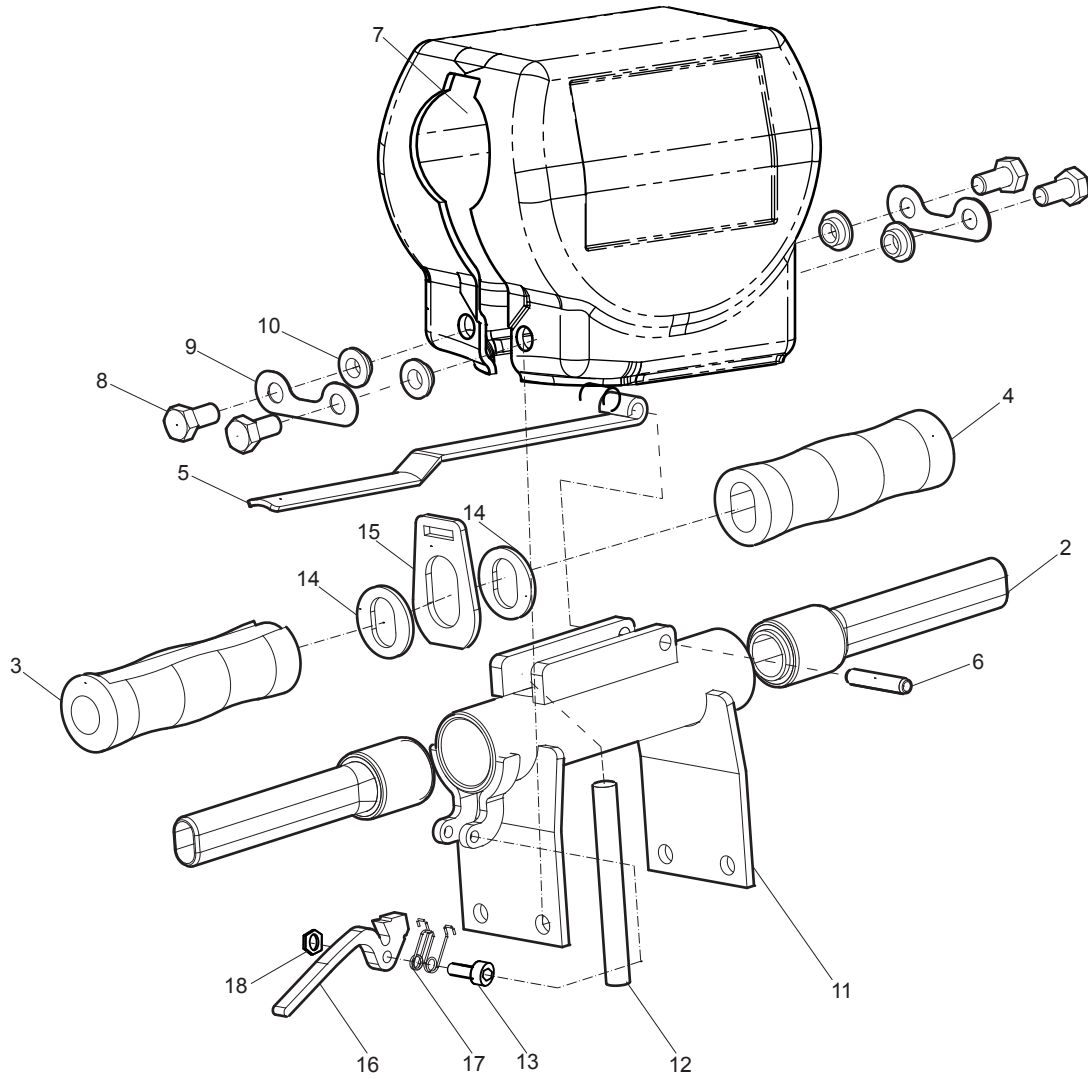


No.	Description	Remark	Quantity	Part number
1(2-11)	Nose part, complete		1	3371 8210 12
2	Nose part	Hexagon 1 x 4¼ in. Hexagon 25 x 108 mm	1	-
3	Bushing	Hexagon 1 x 4¼ in. Hexagon 25 x 108 mm	1	3371 8201 91
4	Chisel bellows		1	3371 8201 93
5	Lock ring	Ø 2.24 x 0.08 in. Ø 57 x 2 mm	1	3371 8207 36
6	Lock pin		1	3371 8020 73
7	Spring		1	3371 8020 75
8	Roll pin	Ø 0.63 x 1.97 in. Ø 16 x 50 mm	1	3371 8157 30
9	Roll pin	Ø 0.39 x 1.97 in. Ø 10 x 50 mm	1	3371 8157 31
10	Latch		1	3371 8201 45
11	Screw	M10 x 55 mm	2	3371 8147 24
12(13-22)	Nose part, complete		1	3371 8210 13
13	Nose part	Hexagon 1½ x 6 in. Hexagon 28 x 152 mm	1	-
14	Bushing	Hexagon 1½ x 6 in. Hexagon 28 x 152 mm	1	3371 8202 17
15	Chisel bellows		1	3371 8202 19
16	Lock ring	Ø 2.52 x 0.08 in. Ø 64 x 2 mm	1	3371 8207 37
17	Lock pin		1	3371 8020 73
18	Spring		1	3371 8020 75
19	Roll pin	Ø 0.63 x 1.97 in. Ø 16 x 50 mm	1	3371 8157 30
20	Roll pin	Ø 0.39 x 1.97 in. Ø 10 x 50 mm	1	3371 8157 31
21	Latch		1	3371 8201 45
22	Screw	M10 x 55 mm	2	3371 8147 24
23(24-33)	Nose part, complete		1	3371 8210 19
24	Nose part	Hexagon 1½ x 6¼ in. Hexagon 28 x 160 mm	1	-
25	Bushing	Hexagon 1½ x 6¼ in. Hexagon 28 x 160 mm	1	3371 8202 18
26	Chisel bellows		1	3371 8202 19
27	Lock ring	Ø 2.52 x 0.08 in. Ø 64 x 2 mm	1	3371 8207 37
28	Lock pin		1	3371 8020 73
29	Spring		1	3371 8020 75
30	Roll pin	Ø 0.63 x 1.97 in. Ø 16 x 50 mm	1	3371 8157 30
31	Roll pin	Ø 0.39 x 1.97 in. Ø 10 x 50 mm	1	3371 8157 31
32	Latch		1	3371 8201 45
33	Screw	M10 x 55 mm	2	3371 8147 24
34(35-44)	Nose part, complete		1	3371 8210 14
35	Nose part	Hexagon 1¼ x 6 in. Hexagon 32 x 152 mm	1	-
36	Bushing	Hexagon 1¼ x 6 in. Hexagon 32 x 152 mm	1	3371 8202 12
37	Chisel bellows		1	3371 8201 92
38	Lock ring	Ø 2.52 x 0.08 in. Ø 64 x 2 mm	1	3371 8207 37
39	Lock pin		1	3371 8020 73
40	Spring		1	3371 8020 75

No.	Description	Remark	Quantity	Part number
41	Roll pin	Ø 0.63 x 1.97 in. Ø 16 x 50 mm	1	3371 8157 30
42	Roll pin	Ø 0.39 x 1.97 in. Ø 10 x 50 mm	1	3371 8157 31
43	Latch		1	3371 8201 45
44	Screw	M10 x 55 mm	2	3371 8147 24
45(46-55)	Nose part, complete		1	3371 8210 11
46	Nose part	Hexagon 1¼ x 6¼ in. Hexagon 32 x 160 mm	1	-
47	Bushing	Hexagon 1¼ x 6¼ in. Hexagon 32 x 160 mm	1	3371 8201 94
48	Chisel bellows		1	3371 8201 92
49	Lock ring	Ø 2.52 x 0.08 in. Ø 64 x 2 mm	1	3371 8207 37
50	Lock pin		1	3371 8020 73
51	Spring		1	3371 8020 75
52	Roll pin	Ø 0.63 x 1.97 in. Ø 16 x 50 mm	1	3371 8157 30
53	Roll pin	Ø 0.39 x 1.97 in. Ø 10 x 50 mm	1	3371 8157 31
54	Latch		1	3371 8201 45
55	Screw	M10 x 55 mm	2	3371 8147 24

Handle standard

1																	
2	3	4	5	6	7	8	9	10	11	12	13	14	15	16	17	18	

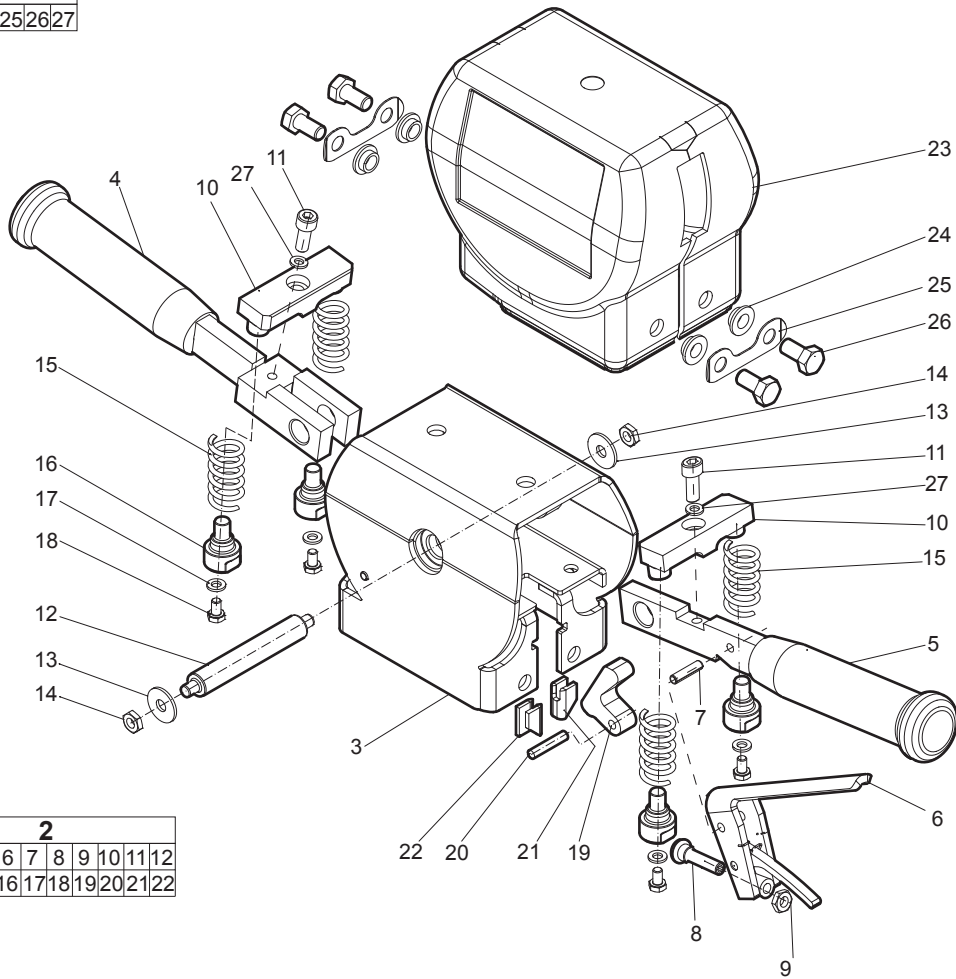


No.	Description	Remark	Quantity	Part number
1(2-18)	Handle standard, complete	With plastic cover	1	3371 8212 08
2	Handle standard		2	3371 8202 04
3	Rubber handle		1	3371 8201 35
4	Rubber handle		1	3371 8201 34
5	Trigger	Standard	1	3371 8202 38
6	Roll pin	Ø 0.31 x 1.6 in. Ø 8 x 40 mm	1	3371 8157 33
7	Top cover		1	3371 8212 02
8	Screw	M10 x 20 mm	4	3371 8157 22
9	Nab		2	3371 8151 31
10	Spacer		4	3371 8151 13
11	Bracket		1	3371 8202 03
12	Nylon guide		1	3371 8202 07
13	Screw	M6 x 30 mm	1	3378 2060 44
14	Washer nylon	Ø 0.83 x 1.46 x 0.12 in. Ø 21 x 37 x 3 mm	2	3371 8207 47
15	Lock plate		1	3371 8202 37
16	Safety trigger		1	3371 8202 36
17	Spring		1	3371 8201 52
18	Nut	M6	1	3371 8147 16

E-handle

1						
2	23	24	25	26	27	

2											
3	4	5	6	7	8	9	10	11	12	13	14
13	14	15	16	17	18	19	20	21	22		



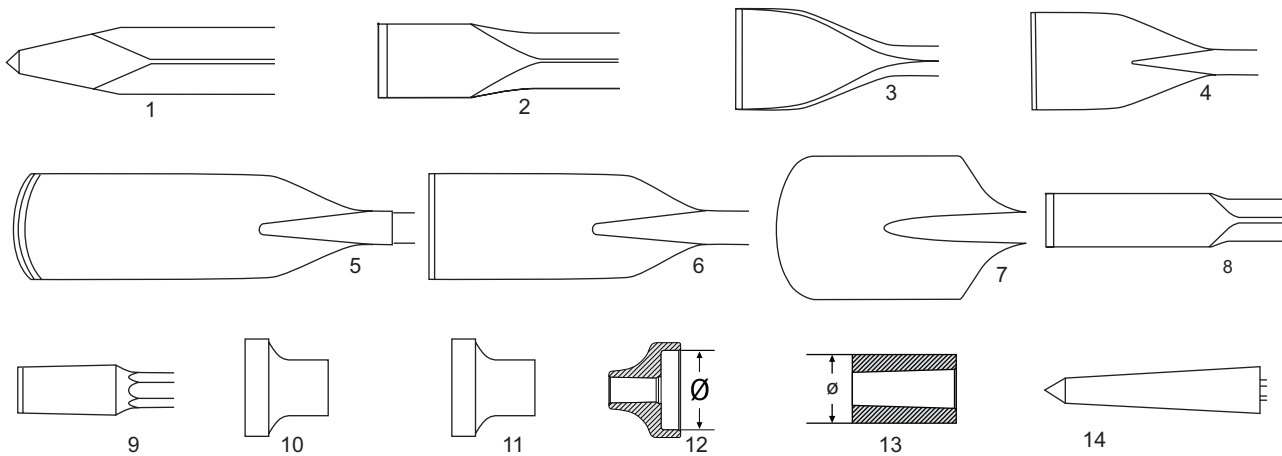
No.	Description	Remark	Quantity	Part number
1(2,23-27)	E-handle, complete	With plastic cover	1	3371 8212 06
2(3-22)	E-handle, complete	Without plastic cover	1	3371 8210 65
3	Frame		1	3371 8212 05
4	Handle		1	3371 8211 73
5	Handle		1	3371 8211 72
6	Trigger lever		1	3371 8212 00
7	Roll pin	Ø 0.24 x 0.94 in. Ø 6 x 24 mm	1	3371 8207 12
8	Thrust pad	With screw M8	1	3371 8210 68
9	Nut	M8	1	3371 8207 22
10	Stopper		2	3371 8211 77
11	Screw	M8 x 25 mm	2	3371 8051 55
12	Pin		1	3371 8211 84
13	Washer	Ø 0.31 in. Ø 8 mm	2	3377 1040 08
14	Nut	M8	2	3371 8207 22
15	Spring		4	3371 8211 78
16	Spring guide		4	3371 8211 75
17	Washer	Ø 0.24 in. Ø 6 mm	4	3377 0004 07
18	Screw	M6 x 10 mm	4	3371 8177 24
19	Trigger pawl		1	3371 8211 76
20	Pin	Ø 0.24 x 1.18 in. Ø 6 x 30 mm	1	3371 8207 11
21	Pin latch right		1	3371 8201 47
22	Pin latch left		1	3371 8201 48
23	Top cover		1	3371 8211 83
24	Spacer		4	3371 8151 13
25	Nab		2	3371 8151 31
26	Screw	M10 x 25 mm	4	3378 0341 02
27	Lock washer	Ø 0.31 in. Ø 8 mm	2	3315 0195 04

Tightening torque

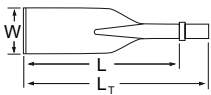
Description	Tightening torque (Nm)	Remark	Part number
Guide socket T	100	LOCTITE® 245™	3371 8141 16
Screw	40	LOCTITE® 245™	3371 8147 23
Nipple	55		3371 8057 11
Guide socket P	100	LOCTITE® 245™	3371 8141 14
Screw	70	LOCTITE® 245™	3371 8157 20
Fitting	-	LOCTITE® 275™	3371 8147 33
Bushing	-	LOCTITE® 648 (275)™	3371 8201 91
Screw	60	LOCTITE® 245™	3371 8147 24
Bushing	-	LOCTITE® 648 (275)™	3371 8202 18
Bushing	-	LOCTITE® 648 (275)™	3371 8202 12
Bushing	-	LOCTITE® 648 (275)™	3371 8201 94

LOCTITE is a registered trademark of Henkel Corporation. 245, 275, and 648 are trademarks of Henkel Corporation.

Working tools



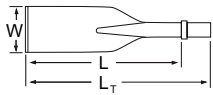
US standard hexagon 1 x 4¼ in. (25 x 108 mm)



Flat to flat

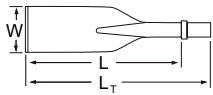
No.	Description	W (in.)	L (in.)	L _T (in.)	Wt (lb)	Part number
1	Moil point	-	15	20	4.6	3083 4030 00
		-	18	22	5.3	3083 4030 10
		-	24	29	6.8	3083 4030 20
		-	36	41	9.7	3083 4030 30
2	Narrow chisel	-	15	20	4.6	3083 3309 00
		-	18	22	5.3	3083 4031 10
		-	24	29	6.8	3083 4031 20
		-	36	41	9.7	3083 4031 30
3	Wide chisel	3	15	20	5.3	3083 3310 00
		3	18	22	5.7	3083 4032 00
		3	24	29	7.3	3083 4032 10
		3	36	41	10.3	3083 4032 20
4	Asphalt cutter	4½	12	16¾	7.1	3083 4034 00
		5	13	17¾	6.4	3083 4033 00
5	Digging chisel	3	15	20	7.0	3083 3311 00
6	Digging spade	4¾	13	17¾	8.8	3083 3312 00
7	Clay spade	4	16	21	6.2	3083 4035 10
		5	16	21	8.2	3083 4035 00
8	Wedge chisel	2	15	20	10.4	3083 3313 00
9	Shaft for tamping pad	-	11	16	4.2	3083 4037 00
10	Tamping pad, round	ø7	-	-	16.8	3083 3252 10
11	Tamping pad, square	7	-	-	13.5	3083 3239 00
12	Driver pad, round	ø4	-	-	5.7	9245 2817 90
		ø2½	-	-	4.2	3371 8060 12
14	Posthole pad	1½	-	-	6.0	9245 2822 30

US standard hexagon 1 $\frac{1}{8}$ x 6 $\frac{1}{4}$ in. (28 x 160 mm)



No.	Description	W (in.)	L (in.)	L _T (in.)	Wt (lb)	Part number
1	Moil point	-	15	21	6.4	3083 3271 00
		-	18	24	7.1	3083 3272 00
		-	39	46	13.7	3083 3273 00
2	Narrow chisel	-	15	21	6.2	3083 3274 00
		-	18	24	7.3	3083 3275 00
		-	39	46	14.1	3083 3276 00
3	Wide chisel	3	15	21	6.6	3083 3277 00
4	Asphalt cutter	5	12	18	8.2	3083 3278 00
5	Digging chisel	3	15	21	9.0	3083 3279 00
6	Digging spade	5	15	21	10.1	3083 3280 00
7	Clay spade	6	15	21	9.0	3083 3281 00
8	Wedge chisel	2	16	22	8.6	3083 3282 00
9	Shaft for tamping pad	-	9	16	6.6	3083 3283 01
10	Tamping pad, round	Ø7	-	-	15.7	3083 3301 00
11	Tamping pad, square	6	-	-	18.1	3083 3302 00
		8	-	-	22.0	3083 3197 00
12	Driving pad	Ø5	-	-	16.8	3376 1120 79
		Ø6	-	-	19.2	3376 1120 77
13	Driver blank	Ø3	-	-	7.5	9245 2827 10

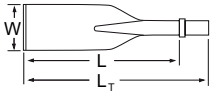
US standard hexagon 1¼ x 6 in. (32 x 152 mm)



Flat to flat

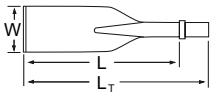
No.	Description	W (in.)	L (in.)	L _T (in.)	Wt (lb)	Part number
1	Moil point	-	14	20	7.3	3083 3285 00
		-	18	24	8.6	3083 4000 10
		-	24	30½	11.2	3083 4000 20
		-	36	42½	15.4	3083 4000 30
2	Narrow chisel	-	14	20	7.0	3083 3286 00
		-	18	24	8.4	3083 4001 10
		-	24	30½	10.8	3083 4001 20
		-	36	42½	15.4	3083 4001 30
3	Wide chisel	3	15	20	7.9	3083 3295 00
		3	18	24	9.3	3083 4002 00
		3	24	30½	11.2	3083 4002 10
		3	36	42½	14.8	3083 4002 20
4	Asphalt cutter	4½	12	18½	8.8	3083 4004 00
		5	13	19½	9.0	3083 3296 00
5	Digging chisel	3	15	21	9.9	3083 3297 00
6	Digging spade	5	13	19	9.5	3083 3298 00
7	Clay spade	5½	15	21	11.7	3083 3299 00
8	Wedge chisel	2	16	22	11.5	3083 3300 00
9	Shaft for tamping pad	-	9	16	6.8	3083 3287 00
10	Tamping pad, round	Ø7	-	-	15.7	3083 3301 00
11	Tamping pad, square	6	-	-	18.1	3083 3302 00
		8	-	-	22.0	3083 3197 00
12	Driving pad	Ø4¾	-	-	16.8	3376 1120 79
		Ø6	-	-	19.2	3376 1120 77
13	Driver blank	Ø3	-	-	7.5	9245 2827 10

US standard hexagon 1¼ x 6¼ in. (32 x 160 mm)



No.	Description	W (in.)	L (in.)	L _T (in.)	Wt (lb)	Part number
1	Moil point	-	15	21	8	3083 3205 00
		-	18	24	9	3083 3206 00
		-	39	46	17	3083 3207 00
2	Narrow chisel	-	15	21	8	3083 3208 00
		-	18	24	9	3083 3209 00
		-	39	46	17	3083 3210 00
3	Wide chisel	3	15	21	8	3083 3211 00
4	Asphalt cutter	5	12	18	9	3083 3212 00
5	Digging chisel	3	15	21	10	3083 3213 00
6	Digging spade	5	15	21	11	3083 3214 00
7	Clay spade	6	15	21	10	3083 3215 00
8	Wedge chisel	2	16	22	8	3083 3216 00
9	Shaft for tamping pad	-	9	16	7	3083 3218 01
10	Tamping pad, round	Ø7	-	-	16	3083 3301 00
11	Tamping pad, square	6	-	-	18	3083 3302 00
		8	-	-	22	3083 3197 00
12	Driving pad	Ø5	-	-	17	3376 1120 79
		Ø6	-	-	19	3376 1120 77
13	Driver blank	Ø3	-	-	7	9245 2827 10

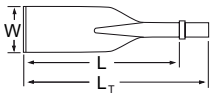
ISO standard hexagon 25 x 108 mm (1 x 4¼ in.)



Point to flat

No.	Description	W (mm)	L (mm)	L _T (mm)	Wt (kg)	Part number
1	Moil point	-	380	500	2.0	3083 3253 00
2	Narrow chisel	-	380	500	2.1	3083 3254 00
3	Wide chisel	75	380	500	2.3	3083 3255 00
5	Digging chisel	75	380	500	3.1	3083 3256 00
6	Digging spade	120	380	500	4.2	3083 3257 00
7	Clay spade	125	430	550	3.8	3083 3033 00
8	Wedge chisel	35	380	500	2.5	3083 3258 00
9	Shaft for tamping pad	-	280	400	2.1	3083 3259 00
10	Tamping pad, round	Ø175	-	-	7.6	3083 3252 10
11	Tamping pad, square	175	-	-	6.1	3083 3239 00
12	Driver pad, round	Ø100	-	-	2.6	9245 2817 90
		Ø65	-	-	1.9	3371 8060 12
14	Posthole pad	40	-	-	2.7	9245 2822 30

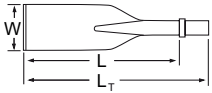
ISO standard hexagon 28 x 160 mm (1¹/₈ x 6¹/₄ in.)



Point to flat

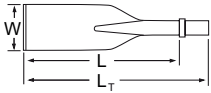
No.	Description	W (mm)	L (mm)	L _T (mm)	Wt (kg)	Part number
1	Moil point	-	380	545	2.9	3083 3271 00
		-	450	615	3.2	3083 3272 00
		-	1000	1165	6.2	3083 3273 00
2	Narrow chisel	-	380	545	2.8	3083 3274 00
		-	450	615	3.3	3083 3275 00
		-	1000	1165	6.4	3083 3276 00
3	Wide chisel	75	380	545	3.0	3083 3277 00
4	Asphalt cutter	115	300	465	3.7	3083 3278 00
5	Digging chisel	75	380	545	4.1	3083 3279 00
6	Digging spade	125	380	545	4.6	3083 3280 00
7	Clay spade	140	380	545	4.1	3083 3281 00
8	Wedge chisel	40	400	565	3.9	3083 3282 00
9	Shaft for tamping pad	-	230	395	3.0	3083 3283 01
10	Tamping pad, round	Ø180	-	-	7.1	3083 3301 00
11	Tamping pad, square	150	-	-	8.2	3083 3302 00
		200	-	-	10.0	3083 3197 00
12	Driving pad	Ø120	-	-	7.6	3376 1120 79
		Ø150	-	-	8.7	3376 1120 77
13	Driver blank	Ø80	-	-	3.4	9245 2827 10

ISO standard hexagon 32 x 152 mm (1¼ x 6 in.)



No.	Description	W (mm)	L (mm)	L _T (mm)	Wt (kg)	Part number
1	Moil point	-	355	520	3.3	3083 3285 00
		-	450	615	3.9	3083 4000 10
		-	610	775	5.1	3083 4000 20
		-	915	1080	7.0	3083 4000 30
2	Narrow chisel	-	355	520	3.2	3083 3286 00
		-	450	615	3.8	3083 4001 10
		-	610	775	4.9	3083 4001 20
		-	915	1080	7.0	3083 4001 30
3	Wide chisel	75	380	545	3.6	3083 3295 00
		75	450	615	4.2	3083 4002 00
		75	610	775	5.1	3083 4002 10
		75	915	1080	6.7	3083 4002 20
4	Asphalt cutter	115	305	470	4.0	3083 4004 00
		125	330	495	4.1	3083 3296 00
5	Digging chisel	75	380	545	4.5	3083 3297 00
6	Digging spade	125	320	485	4.3	3083 3298 00
7	Clay spade	140	380	545	5.3	3083 3299 00
8	Wedge chisel	50	400	565	5.2	3083 3300 00
9	Shaft for tamping pad	-	230	395	3.1	3083 3287 00
10	Tamping pad, round	Ø180	-	-	7.1	3083 3301 00
11	Tamping pad, square	150	-	-	8.2	3083 3302 00
		200	-	-	10.0	3083 3197 00
12	Driving pad	Ø120	-	-	7.6	3376 1120 79
		Ø150	-	-	8.7	3376 1120 77
13	Driver blank	Ø80	-	-	3.4	9245 2827 10

ISO standard hexagon 32 x 160 mm (1¼ x 6¼ in.)



Point to flat

No.	Description	W (mm)	L (mm)	L _T (mm)	Wt (kg)	Part number
1	Moil point	-	380	545	3.5	3083 3205 00
		-	450	615	3.9	3083 3206 00
		-	1000	1165	7.6	3083 3207 00
2	Narrow chisel	-	380	545	3.5	3083 3208 00
		-	450	615	4.0	3083 3209 00
		-	1000	1165	7.5	3083 3210 00
3	Wide chisel	75	380	545	3.7	3083 3211 00
4	Asphalt cutter	115	300	465	4.0	3083 3212 00
5	Digging chisel	75	380	545	4.4	3083 3213 00
6	Digging spade	125	380	545	4.9	3083 3214 00
7	Clay spade	140	380	545	4.4	3083 3215 00
8	Wedge chisel	40	400	565	3.8	3083 3216 00
9	Shaft for tamping pad	-	235	400	3.1	3083 3218 01
10	Tamping pad, round	Ø180	-	-	7.1	3083 3301 00
11	Tamping pad, square	150	-	-	8.2	3083 3302 00
		200	-	-	10.0	3083 3197 00
12	Driving pad	Ø120	-	-	7.6	3376 1120 79
		Ø150	-	-	8.7	3376 1120 77
13	Driver blank	Ø80	-	-	3.4	9245 2827 10

Accessories

Hoses and couplings

Description	Remark	Quantity	Part number
Connection hose, complete	Ø ½ in. L = 16 in. Ø 12.5 mm L = 0.4 m	1	3371 8010 83
Hose	Ø ½ in. L = 16 in. Ø 12.5 mm L = 0.4 m	2	3371 8030 50
Seal ring	Bonded seal ½ in. BSP	2	3371 8057 14
Quick-release coupling	Female ½ in. BSP	1	3371 8051 33
Quick-release coupling	Male ½ in. BSP	1	3371 8051 34
Protective cap	Female	1	3371 8057 33
Protective cap	Male	1	3371 8057 32
Twin hose, complete	Ø ½ in. L = 276 in. Ø 12.5 mm L = 7 m	1	3371 8010 87
Seal ring	Bonded seal ½ in. BSP	4	3371 8057 14
Quick-release coupling	Female ½ in. BSP	2	3371 8051 33
Quick-release coupling	Male ½ in. BSP	2	3371 8051 34
Protective cap	Female	2	3371 8057 33
Protective cap	Male	2	3371 8057 32
Twin hose	Ø ½ in. L = 276 in. Ø 12.5 mm L = 7 m	1	3371 8030 52
Connection hose, complete	Ø ½ in. L = 62 in. Ø 12.5 mm L = 1.6 m	1	3371 8011 90
Hose	Ø ½ in. L = 62 in. Ø 12.5 mm L = 1.6 m	2	3371 8030 64
Seal ring	Bonded seal ½ in. BSP	2	3371 8057 14
Quick-release coupling	Female ½ in. BSP	1	3371 8051 33
Quick-release coupling	Male ½ in. BSP	1	3371 8051 34
Protective cap	Female	1	3371 8057 33
Protective cap	Male	1	3371 8057 32
Label "P"	Pressure side	1	3371 8021 15

Kits

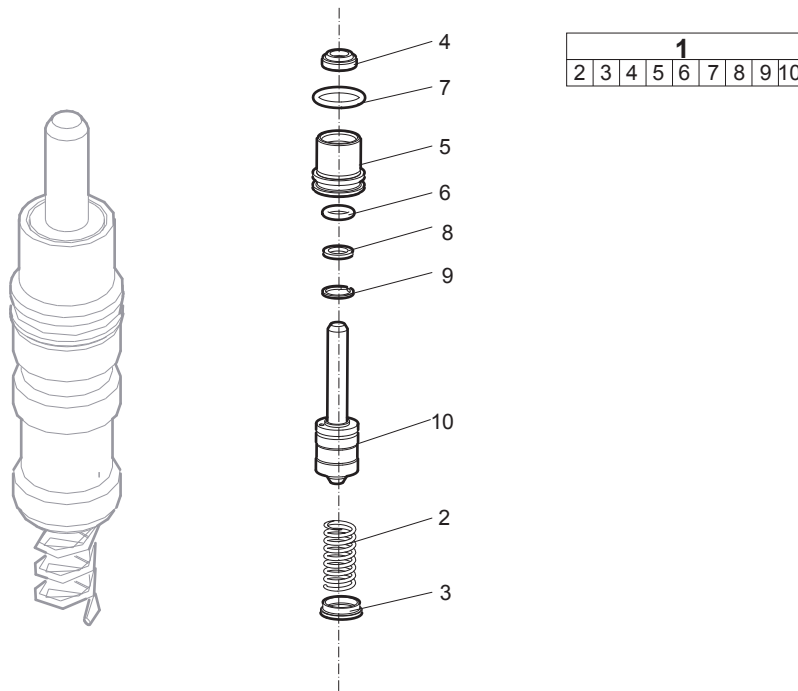
Label kit

Description	Remark	Quantity	Part number
Label kit		1	3371 8210 95
Safety label		1	3371 8960 61
Pressure charge	"N ₂ "	1	-
Product label	"Atlas Copco"	2	-
Product label	"LH 190 E"	1	-
Product label	"LH 180"	1	-
Noise level label		1	-
EHTMA Category C	20 lpm	1	-
Shank size	"Shank size 25 x 108"	1	-
Shank size	"Shank size 28 x 160"	1	-
Shank size	"Shank size 28 x 152"	1	-
Shank size	"Shank size 32 x 152"	1	-
Shank size	"Shank size 32 x 160"	1	-

Seal kit

Description	Remark	Quantity	Part number
Seal kit		1	3371 8140 21
Seal	Ø 0.31 x 0.55 x 0.14 x 0.20 in. Ø 8 x 14 x 3.5 x 5 mm	1	3371 8055 03
O-ring	Ø 0.64 x 0.09 in. Ø 16.3 x 2.4 mm	1	3371 8147 02
O-ring	Ø 0.33 x 0.09 in. Ø 8.3 x 2.4 mm	1	3371 8147 00
Back-up ring		1	3371 8147 01
Circlip		1	3371 8147 12
Circlip		2	3371 8147 32
Protective cap	M24 x 1.5 mm	1	3371 8137 10
Seal ring	Ø 0.34 x 0.51 x 0.04 in. Ø 8.7 x 13 x 1 mm	1	3371 8147 09
O-ring	Ø 0.87 x 0.06 in. Ø 22 x 1.5 mm	2	3371 8207 06
O-ring	Ø 0.98 x 0.06 in. Ø 25 x 1.5 mm	1	3371 8147 48
O-ring	Ø 0.95 x 0.12 in. Ø 24.2 x 3 mm	2	3371 8147 03
O-ring	Ø 1.30 x 0.08 in. Ø 33 x 2 mm	2	3371 8147 10
O-ring	Ø 0.47 x 0.06 in. Ø 12 x 1.5 mm	2	3371 8147 50
O-ring	Ø 0.51 x 0.06 in. Ø 13 x 1.5 mm	1	3371 8147 49
Seal ring	½ in. BSP	2	3371 8057 14
O-ring	Ø 2.72 x 0.06 in. Ø 69 x 1.5 mm	1	3371 8147 51
Seal	Ø 1.10 x 1.42 x 0.22 in. Ø 28 x 36 x 5.7 mm	1	3371 8141 72
Back-up washer	Ø 1.13 x 1.50 x 0.08 in. Ø 28.7 x 38 x 2 mm	1	3371 8141 69
Circlip		1	3371 8147 54
Wiper	Ø 1.10 x 1.50 x 0.28 x 0.39 in. Ø 28 x 38 x 7 x 10 mm	1	3371 8147 07
Lock ring		1	3371 8157 38
Nab		2	3371 8151 31

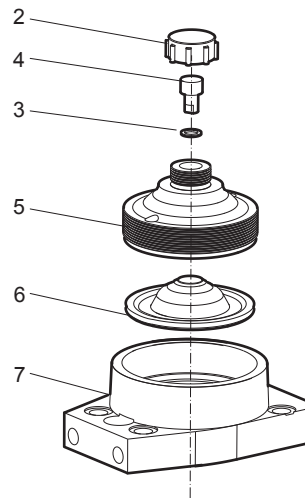
Trigger valve kit



No.	Description	Remark	Quantity	Part number
1(2-10)	Trigger valve kit		1	3371 8140 58
2	Spring		1	3371 8141 63
3	Washer		1	3371 8147 52
4	Seal		1	3371 8055 03
5	Packing gland		1	3371 8141 20
6	O-ring		1	3371 8147 00
7	O-ring		1	3371 8147 02
8	Back-up ring		1	3371 8147 01
9	Circlip		1	3371 8147 12
10	Trigger spool with rod		1	3371 8200 71

Accumulator kit

			1			
2	3	4	5	6	7	



No.	Description	Remark	Quantity	Part number
1(2-7)	Accumulator kit		1	3371 8140 65
2	Protective cap		1	3376 1170 71
3	Seal ring	Ø 0.34 x 0.51 x 0.04 in. Ø 8.7 x 13 x 1 mm	1	3371 8147 09
4	Charging screw		1	3371 8131 03
5	Accumulator cover		1	3371 8140 66
6	Diaphragm		1	3371 8140 52
7	Accumulator body		1	3371 8150 65



Any unauthorized use or copying of the contents or any part thereof is prohibited.
This applies in particular to trademarks, model denominations, part numbers, and drawings.

© 2011 Atlas Copco Construction Tools AB | No. 3392 5219 01a | 2011-05-16

www.atlascopco.com